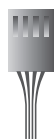


SquaRGB



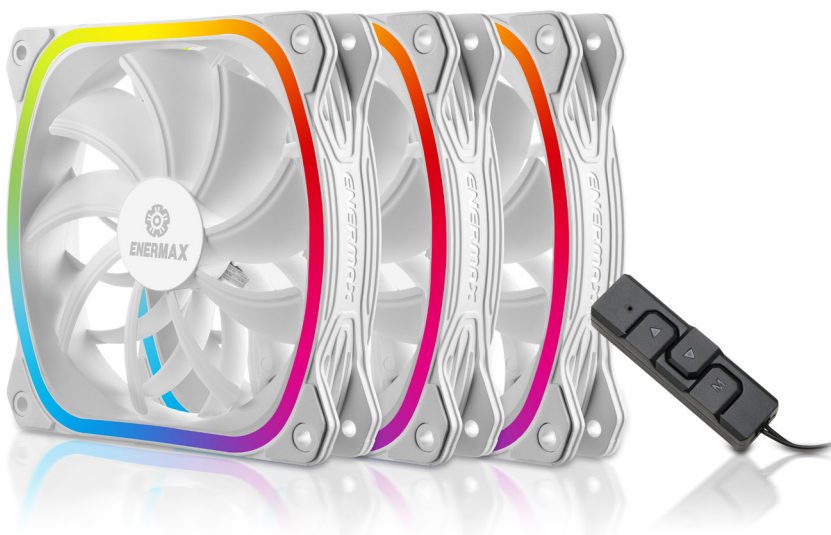
SG Pack

UCSQARGB12P-W-SG



Plug & Play

RGB-Sync
Motherboards



3-Fan Pack

UCSQARGB12P-W-BP3



RGB
Control Box

RGB-Sync
Motherboards

- Unique square-shaped RGB frame at the front and diamond bright at the back
- Support addressable RGB motherboard sync
- Enlarged blade surface increases more airflow by 40%
- Optimized low 300RPM

SquA RGB, an addressable RGB fan series, is designed with square-shaped lighting and PWM control. Featuring ENERMAX LED LIGHTING Technology, SquA RGB can deliver incredibly bright and even lighting. Engineered for high performance and better user experience, SquA RGB is characterized by 300RPM starting speed and up to 40% stronger airflow than other RGB fans. Furthermore, the vortex frame design generates concentrated airflow and ENERMAX's Air Inlet Design facilitates airflow effectively. SquA RGB is capable to provide superior airflow and stunning lighting effect.



Features



■ Unique Square-shaped Lighting

SquA RGB features square-shaped lighting and also supports addressable RGB lighting sync with 16.8 million color options.

■ Case Moddings and Builds with Square-shaped Lighting Fan

SquA RGB provides users with 2 types of lighting patterns to make the perfect match with system configuration.



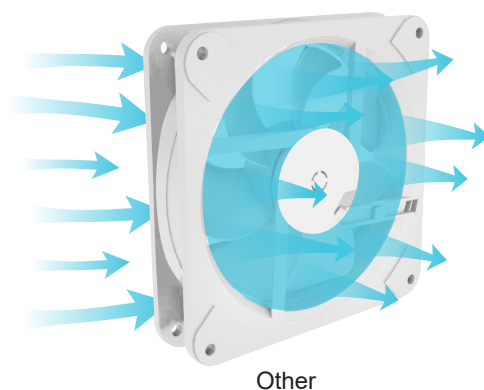
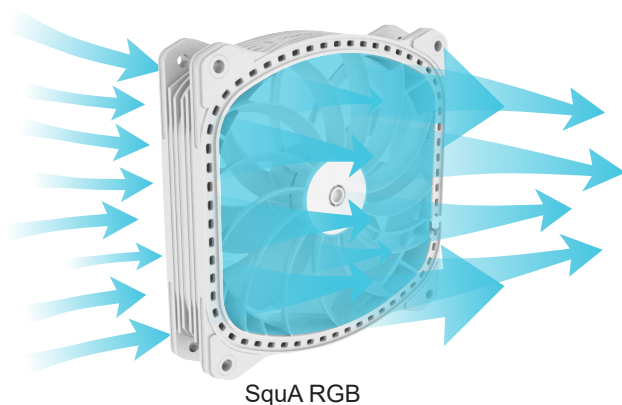


Diamond Bright Behind SquA RGB

A gleam through the holes around the back of the frame delivers the incredible visual experience as diamonds shining in the dark.

Up to 40% Stronger Airflow

The enlarged blade surface can create up to 40% stronger airflow than other RGB fans.



Addressable RGB Lighting Synchronization

Synchronizable RGB lighting via addressable RGB header of motherboards.

(The RGB header 4-pin assignment is +5V/D/-/G)



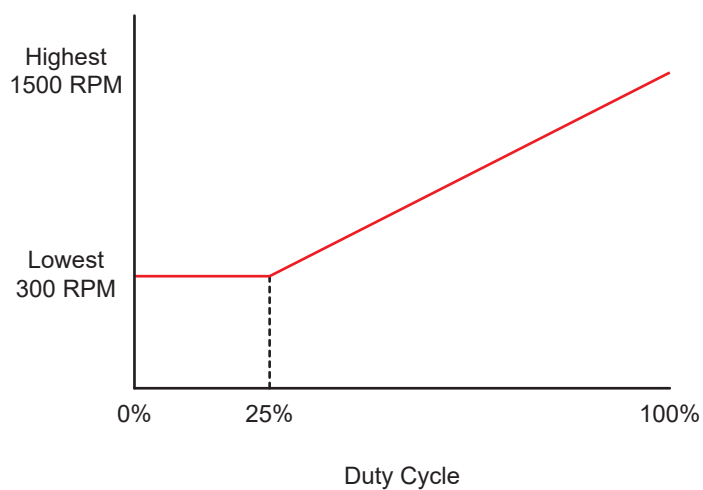
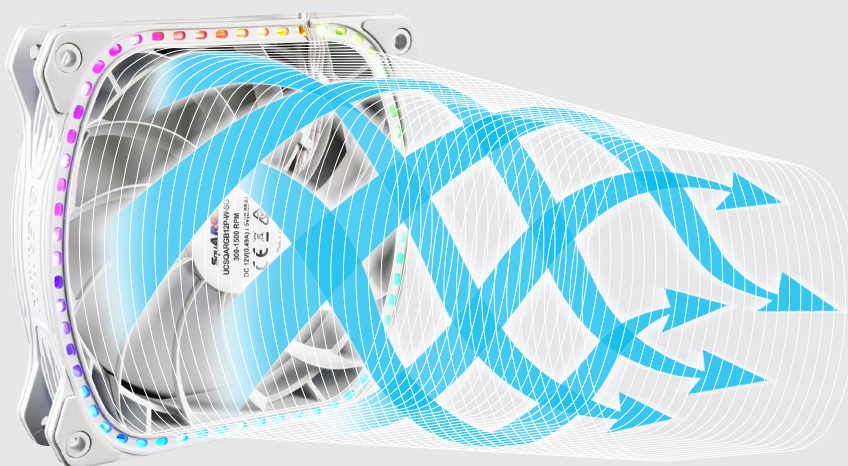


ENERMAX's Air Inlet Design

ENERMAX's Air Inlet Design brings more air in and also facilitates the airflow efficiency.

Vortex Frame Design

Vortex frame design can generate concentrated airflow, especially perfect for CPU cooler.



Optimized low 300RPM starting speed

The smart PWM speed control provides 300RPM starting speed for superior silent experience.

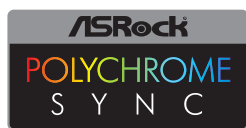
Vibration-damping Rubber Pads

Vibration-damping rubber pads absorb the excessive vibration and noise.



3-Fan Pack Only

2 Ways to Control RGB Lighting Effects



Through Motherboard Software

Users can sync the RGB lighting with motherboards featuring addressable RGB headers (pin assignment: 5V/D/-/G).



Through ENERMAX RGB Control Box

Users can use the included control box to adjust preferred lighting effects (10 pre-set effects), brightness and speed.

Single Pack Only

Plug & Play to Display Rainbow RGB Lighting Effects



For non-RGB motherboard users

Users can use the PWM power cable to connect the fan to create constant rainbow RGB lighting effects.

For addressable RGB motherboard users

Users can sync the RGB lighting with motherboards featuring addressable RGB header (4-pin assignment: 5V/D/-/G).

Model Number	UCSQARGB12P-W-SG	UCSQARGB12P-W-BP3
Fans/Model	1 pc	3 pcs
Dimension (mm)	120(W) x 120(H) x 26(D)	
Speed (RPM)	300- 1500 (±10%)	
Air Flow (CFM)	24.53 ~ 68.27	
Air Flow (m³/h)	41.67 ~ 115.99	
Static Pressure (mm-H ₂ O)	0.17 ~ 1.898	
Minimal Noise (dBA)	12 ~ 23	
Rated Voltage Fan (V)	12	
Rated Current Fan (A)	0.21	
Rated Voltage RGB LED (V)	5 (or 12V when connecting to the PWM header only)	5
Rated Current RGB LED (A)	0.68 (or 0.28A when connecting to the PWM header only)	0.68
MTTF (hours)	≥ 100,000 @ 25°C	
Connector	1 x 4-pin PWM connector 1 x 4-pin ARGB connector (5V/D/-/G)	
Accessory	1 x ARGB Y cable (5V/D/-/G) 1 x GIGABYTE ARGB adapter 1 x Molex adapter 4 x Screw	1 x ENERMAX integrated RGB control box 1 x ARGB 3 to 1 cable (5V/D/-/G) 1 x GIGABYTE ARGB adapter 1 x PWM 3 to 1 cable 1 x Molex adapter 12 x Screw

Shipping Information

Barcode	EAN	4713157724304	4713157724311
	UPC	819315024300	819315024317
Box Dimension	133 x 160 x 32 mm		133 x 160 x 100 mm
Gross Weight / Unit	0.25 kg		0.74 kg
Carton Dimension	490 x 340 x 270 mm		538 x 335 x 309 mm
Q'ty / Carton	60 PCS		20 PCS
Gross Weight / Carton	15.2 kg		14.8 kg