

“BRICK” EB208S 2.5”HDD ENCLOSURE

A. Package Content

- “Brick” EB208S 2.5”HDD Enclosure
- USB 2.0 cable
- Tool package (Screwdriver*1+Screw for top cover*1)
- User’s manual
- Carry Bag

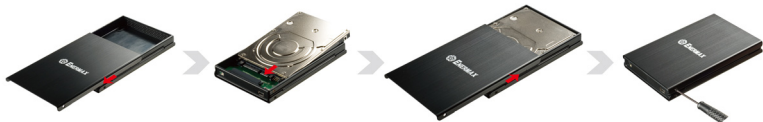
B. Minimum System Requirements

1. Windows 98 SE/ ME /2000 /XP, and Windows Vista
2. Mac OS 9.x (Apple USB support 1.3.5 and greater) and Mac OS 10.1, 10.2, 10.3, and 10.4
3. Computer with USB 2.0 or 1.1 interface
4. PC: Intel Pentium 233MHz-compatible processor or greater
5. Mac: G3 processor or greater
6. Minimum 32MB RAM

“BRICK” EB208S 2.5”HDD ENCLOSURE

C. Hardware Installation

1. Slide out the top aluminum cover
2. Insert the SATA HDD and connect it to the SATA connectors on the PCBA.
3. Put top aluminum cover back
4. Fix the top cover with the screw enclosed in the tool package.



D. LED Indicator

- Power : Blue
- Access(Read/Write): Purple

“BRICK” EB208S 2.5”HDD ENCLOSURE

E. Using your EB2o8S

Introduction

- Do not connect the enclosure to the computer until the driver is completely installed.
- Please make sure you format the HDD before the first time use.
- Driver installation is not required when using Windows ME/2000/XP/Vista
- When using Windows 98SE, please log on to www.enermax.com for drivers
- Unplug Procedure on a PC (Microsoft Windows)*
 1. Click on the taskbar icon for the external hardware
 2. Choose the external HDD and confirm to remove it
- Unplug Procedure on a Macintosh (Apple Mac OS)*
 1. Drag the external HDD icon into the trash bin
 2. Turn off your device

*For safe removal of your drive and assure no data is lost, always follow the unplug procedure. If not, errors message might show up.

- The USB cable with two USB plugs is designed for efficient power supply. Generally you only need one USB connection to drive the external HD. Some desktops or laptops limit the host USB power supply to the external USB devices or some HDDs require more power. In those cases, you need to plug two USB plugs to get enough power supply.

“BRICK” EB208S 2.5”HDD ENCLOSURE

F. Q & A

Question:

I could see the icon at the right down comer on the screen, but I still couldn't find my external HDD.

Answer:

- a. Please make sure your HDD has been installed correctly.
- b. Please make sure your HDD has been set in “Master” position or factory default.
- c. Please make sure you have installed correct driver for this enclosure for Windows 98SE.
- d. Please make sure your HDD has been formatted.

© Copyright 2009 Enermax Technology Corporation. All Rights Reserved.

The information contained in this manual is believed to be accurate and reliable.

Enermax Technology Corporation assumes no responsibility for any errors contained in this manual. Enermax Technology Corporation reserves the right to make changes in the specifications and/or design of this product without prior notice.

The diagrams contained in this manual may also not fully represent the product that you are using and are there for illustration purposes only.

All mentioned company and product names are trademarks or registered trademarks of their respectable owners.